

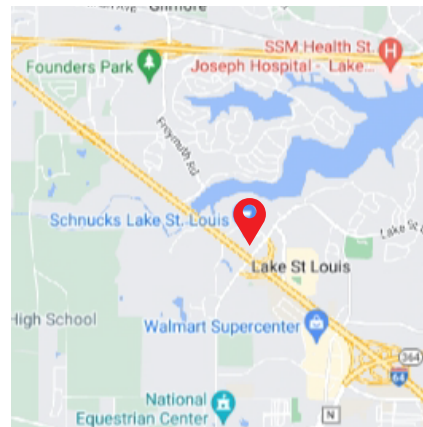


4,564 SF AVAILABLE FOR LEASE

901 Civic Center Drive | Lake St. Louis, MO 63367

PROPERTY HIGHLIGHTS

- Out lot to a Schnucks anchored S/C
- Existing drive-through; 2 lanes and an ATM lane
- Building is in excellent condition



FOR LEASE

DEMOGRAPHICS

	1 Mi.	3 Mi.	5 Mi.
Population	12,404	51,359	108,901
Avg. HH Income	\$99,881	\$110,557	\$108,605
#of Households	1,777	19,245	40,244

FOR MORE INFO CONTACT:

THOMAS EGAN

tegan@boudoures.com

314-378-6083

WM. BOUDOURES CO.

8029 Clayton Road

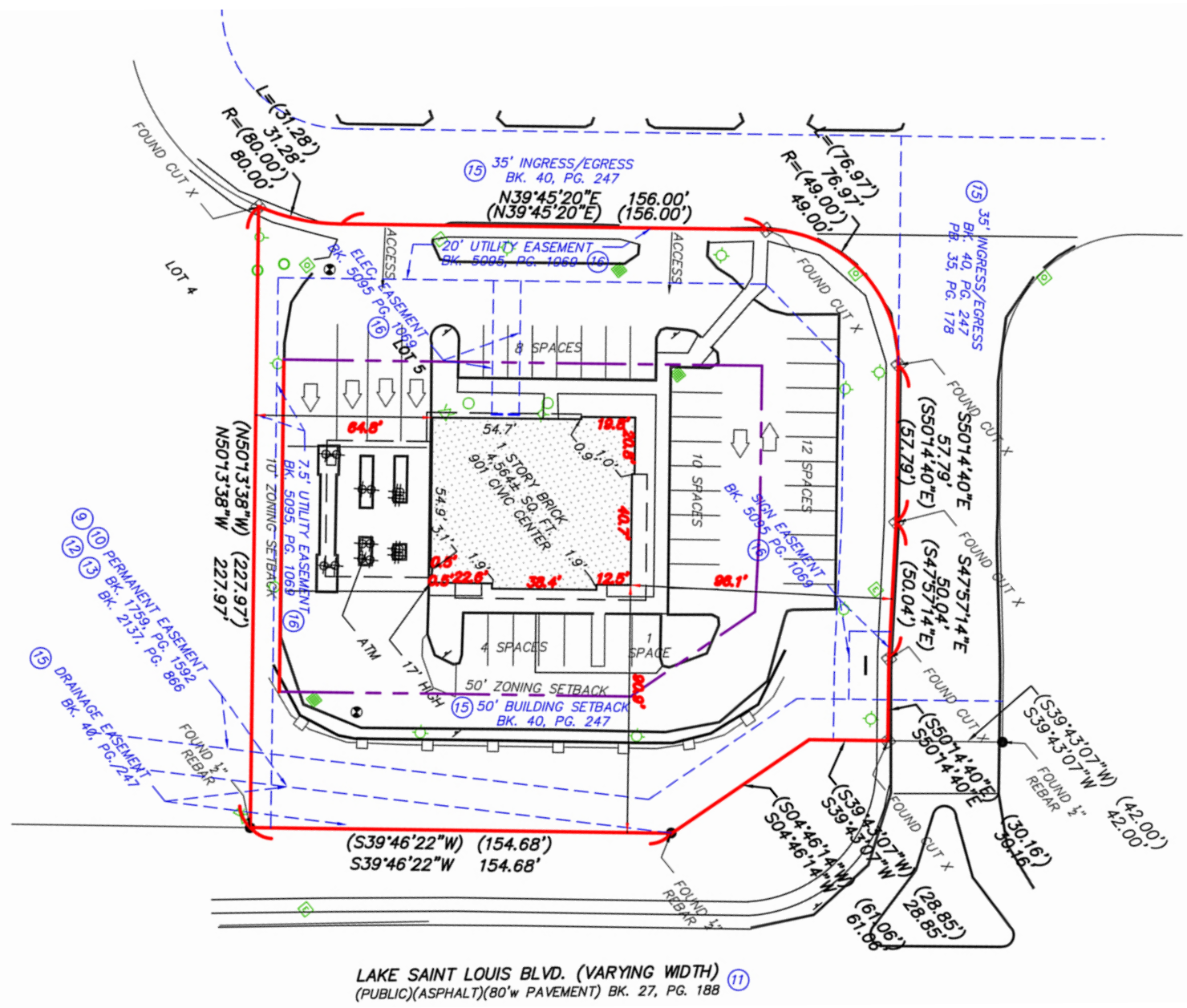
St. Louis, MO 63117

314-725-1997

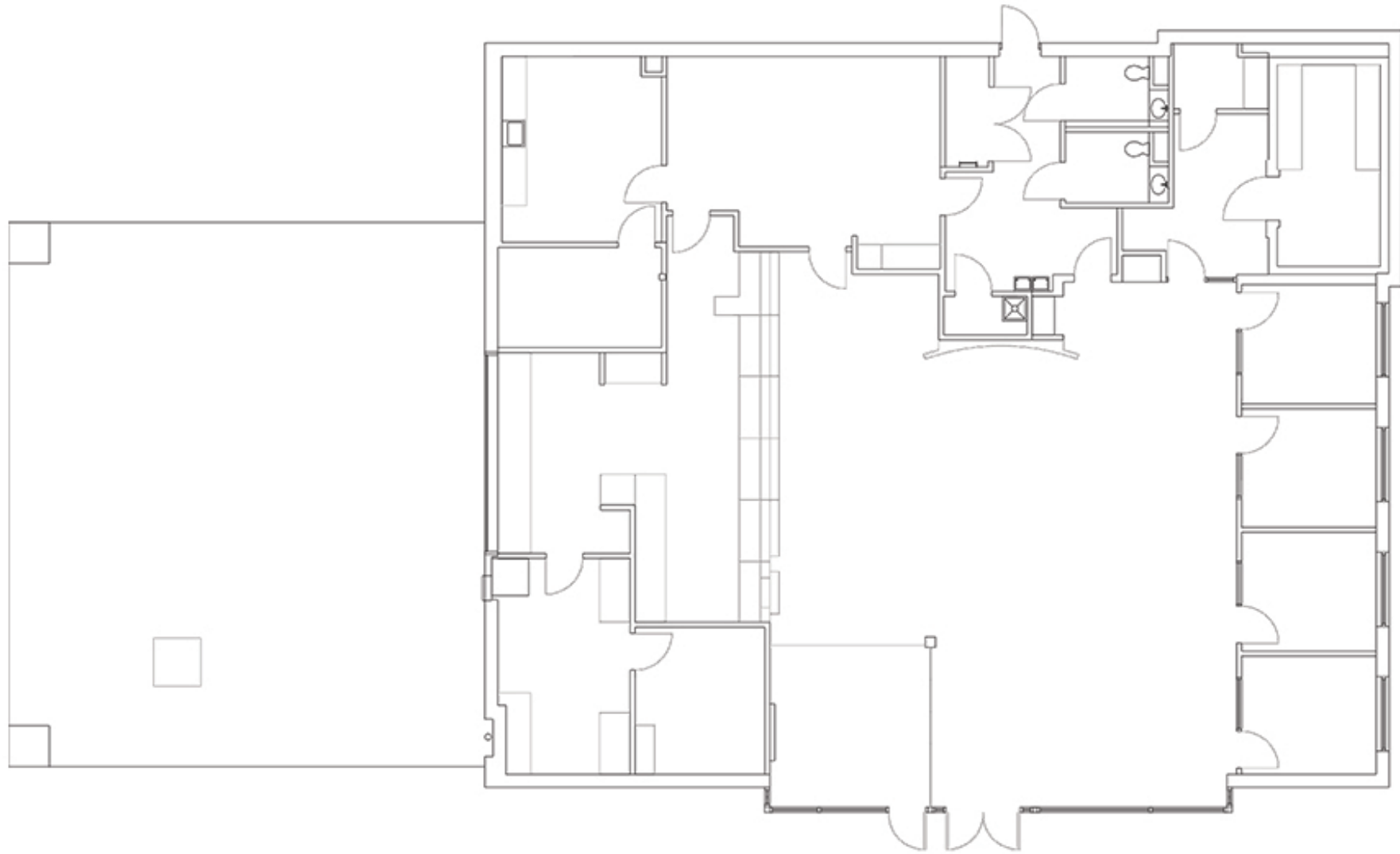
www.boudoures.com



SURVEY



SITE PLAN



AERIAL

